

Work Area Outlets – Keystone Boxes

Optronics offer a range of Mounted Keystone Boxes that can accept: CAT5e, CAT6, or CAT6A keystone jacks. These boxes are perfect for surface/wall mounted applications within a network.

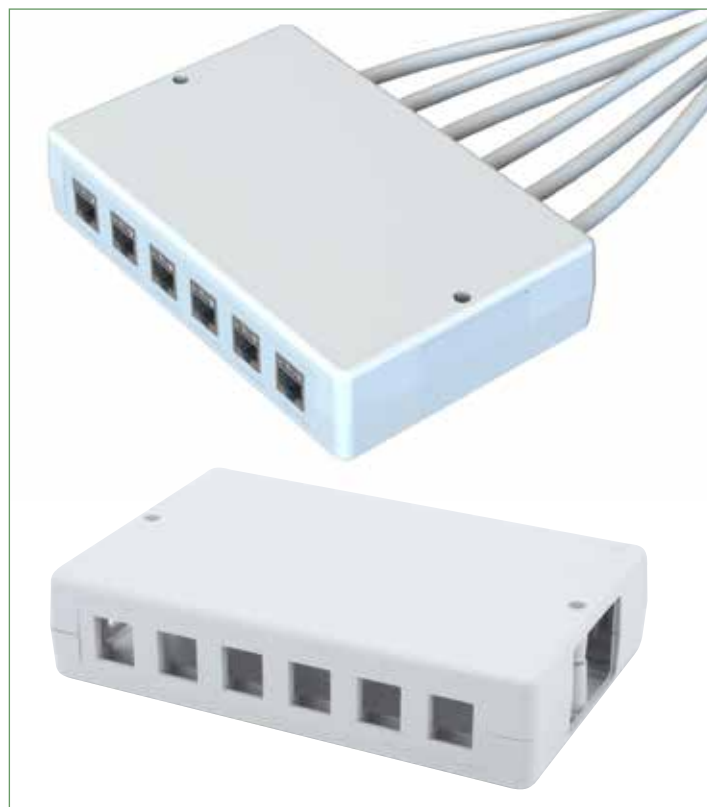
Features

- > **Constructed from durable ABS plastic with a high quality finish**
- > **Comes in 1, 2 and up to 12 port configurations**
- > **Easy to assemble and reduces installation times**
- > **Mounts easily with supplied mounting screws**
- > **Compatible with the majority of Optronics CAT5e, CAT6 and CAT6A keystones***

**Not all keystone types are compatible. For more information please check with your sales representative.*

Applications

- > **Internal application**
- > **Telecommunication and premise networks**



12 port mounted box for keystone jacks/module inserts

Product consists of x1 box, x2 front panels and x1 cable guide. Can be used in 6 port or 12 port configurations with multiple cable entry points available.

Technical Specification

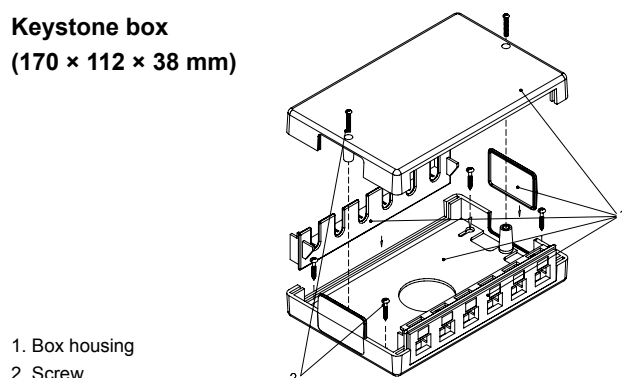
DESCRIPTION	KEYSTONE BOX	'MODULE INSERT' BOX
Material	ABS, UL94V-0	ABS, UL94V-0
Length (mm)	170	170
Width (mm)	112	112
Depth (mm)	38	38
Colour	White	White

Ordering Information

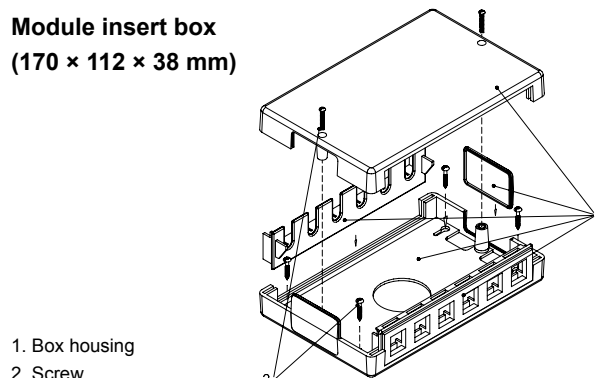
DESCRIPTION	PART NUMBER
101-001	Mounted box for keystone jacks only - White
101-002	Mounted box for module insert of BNC, F and fibre adaptors - White

Technical Drawing

Keystone box
(170 × 112 × 38 mm)



Module insert box
(170 × 112 × 38 mm)



Single and double port mounted keystone box with out shutter

Technical Specification

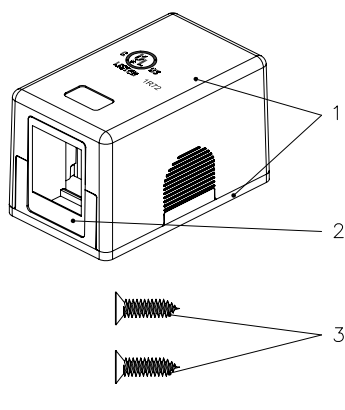
DESCRIPTION	1-PORT BOX W/O SHUTTER	2-PORT BOX W/O SHUTTER
Material	ABS, UL94V-0	ABS, UL94V-0
Length (mm)	30	30
Width (mm)	50	50
Depth (mm)	30	30
Colour	White	White

Ordering Information

DESCRIPTION	PART NUMBER
101-003	Single port mounted box, without shutter - White
101-004	Double port mounted box, without shutter - White

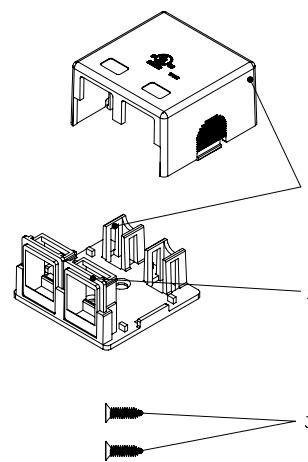
Technical Drawing

1-port w/o shutter
(30 × 50 × 30 mm)



1. Box
2. Insert
3. Screw

2-port w/o shutter
(50 × 50 × 30 mm)



1. Box
2. Bracket
3. Screw

Single and double port mounted keystone box with shutter

Technical Specification

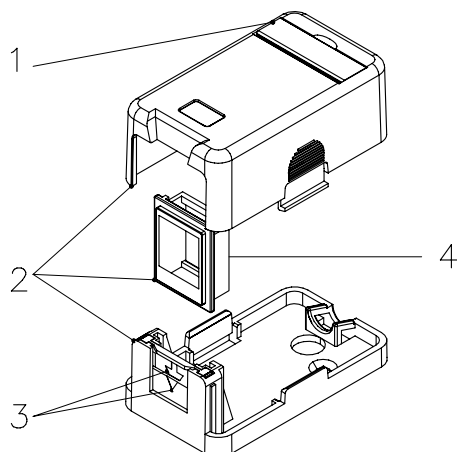
DESCRIPTION	1-PORT BOX WITH SHUTTER	2-PORT BOX WITH SHUTTER
Material	ABS, UL94V-0	ABS, UL94V-0
Length (mm)	37	63
Width (mm)	65	65
Depth (mm)	30	30
Colour	White	White

Ordering Information

DESCRIPTION	PART NUMBER
101-005	Single port mounted box with shutter with name plate White
101-006	Double port mounted box with shutter with name plate White

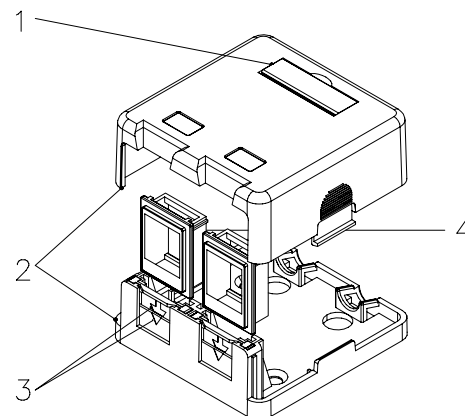
Technical Drawing

1-port w/ shutter
(37 × 65 × 30 mm)



1. Identification
2. Box
3. Dust Cover
4. Insert

2-port w/ shutter
(63 × 65 × 30 mm)



1. Identification
2. Box
3. Dust Cover
4. Insert