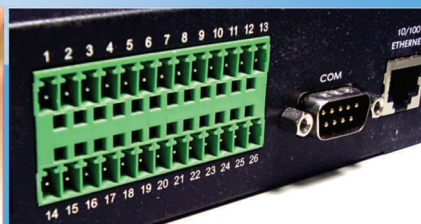
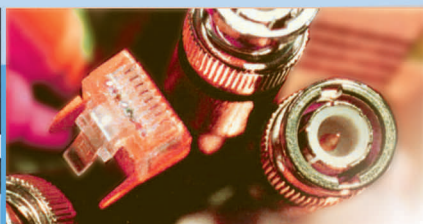


4-CH MJPEG Video Server

The VIVOTEK VS2403, supporting four analog video inputs and four sets of DI/DO, delivers real-time MJPEG video streams for remote monitoring anywhere. Using Philips Trimedia PNX 1302 DSP, and equipped with 4MB flash ROM and 32MB SDRAM, VS2403 offers 3 sets of intelligent motion detection windows, pre/post alarm snapshots up to 15 images per channel, as well as receive high quality image of 4CIF. Furthermore, it comes with a web server so that users can easily have pan/tilt/zoom camera control, quad screen display, privacy mask support, IP address filtering and so on.



VS2403

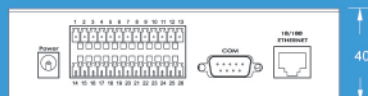
Features

- MJPEG Video Compression
- Four Video Inputs
- Supports IP Address Filtering
- Supports Privacy Mask Function
- Remote PTZ Camera Control
- Intelligent Motion Detection
- Pre/Post Alarm Snapshots, Buffer with Up to 15 Images Per Channel
- Four Sets of Digital I/O for Sensors & Alarms
- Adjustable Network Bandwidth

Front Panel



Rear Panel



Technical Specifications

System	<ul style="list-style-type: none"> CPU: Trimedia PN1302 RAM: 32MB SDRAM ROM: 4MB FLASH ROM 	Dimensions	<ul style="list-style-type: none"> Length: 160mm Width: 146mm Height: 40mm
Networking	<ul style="list-style-type: none"> Protocols TCP/IP, HTTP, SMTP, FTP, Telnet, NTP, DNS, DDNS, DHCP, UPnP, PPPoE Ethernet 10 baseT or 100 baseT Fast Ethernet auto negotiation 	Weight	<ul style="list-style-type: none"> NET.820g
Video	<ul style="list-style-type: none"> Algorithm MJPEG Video Input 4 analog video inputs Features Adjustable image size and quality B/W or color control Quad screen display Time stamp/ text Privacy mask Three configurable motion detection windows Resolution NTSC Up to 30 frames at 176x120 Up to 30 frames at 352x240 Up to 30 frames at 704x480 Up to 10 frames at 704x480 Up to 15 frames for Quad PAL Up to 25 frames at 176x144 Up to 25 frames at 352x288 Up to 25 frames at 704x288 Up to 10 frames at 704x576 Up to 15 frames for Quad 	Power	<ul style="list-style-type: none"> 12VDC Consumption: 8W
		Operating Environments	<ul style="list-style-type: none"> Temperature: 0~50°C (32~122°F) Humidity: 95% RH
		EMI & Safety	<ul style="list-style-type: none"> CE, FCC
		Security	<ul style="list-style-type: none"> Administrator and user group protected Password authentication
		Pan/Tilt/Zoom	<ul style="list-style-type: none"> Multiple PTZ camera control through RS232 or RS485 Currently supported devices and protocols Sony VISCA, Canon VC-C1, VC-C3, VC-C4, Samsung Dynacolor DynaDome, Pelco D, LiLin, Ernitec CGI command serial driver is supported
		Alarm Features	<ul style="list-style-type: none"> Motion detection with percentage and sensitivity Daily repeat timing schedule Pre/post alarm snapshots up to 15 images per channel Automatic transfer of stored images via email or FTP
		Development Kit	<ul style="list-style-type: none"> Open ActiveX control
		Viewing System Requirements	<ul style="list-style-type: none"> Internet Explorer 5.x or above; Netscape Navigator 4.x or above
Serial Port	<ul style="list-style-type: none"> COM 9 pin D-SUB RS232 (PTZ camera control) max. 115.2kbps RS485 (PTZ camera control) 	Free Bundled ST2202 Software	<ul style="list-style-type: none"> Remote configuration and control sixteen devices Continuous and event triggered recording E-mail alarm system once triggered by motion detection E-map, showing camera's location and background Advanced search and event list search in playback Supports different speeds in playback
General I/O	<ul style="list-style-type: none"> 4 sensor inputs max. 12VDC 50mA 4 relay outputs max. 24VDC 1A / 125VAC 0.5A 		
LED Indicators	<ul style="list-style-type: none"> System power and status indicators Network link and speed indicators 		

All specifications are subject to change without notice.
All other trademarks are owned by their respective companies.



6F, No.192, Lien-Cheng Rd., Chung-Ho, Taipei County, Taiwan
Tel: +886 2 82455282
Fax: +886 2 82455532
E-mail: sales@vivotek.com
Http://www.vivotek.com

