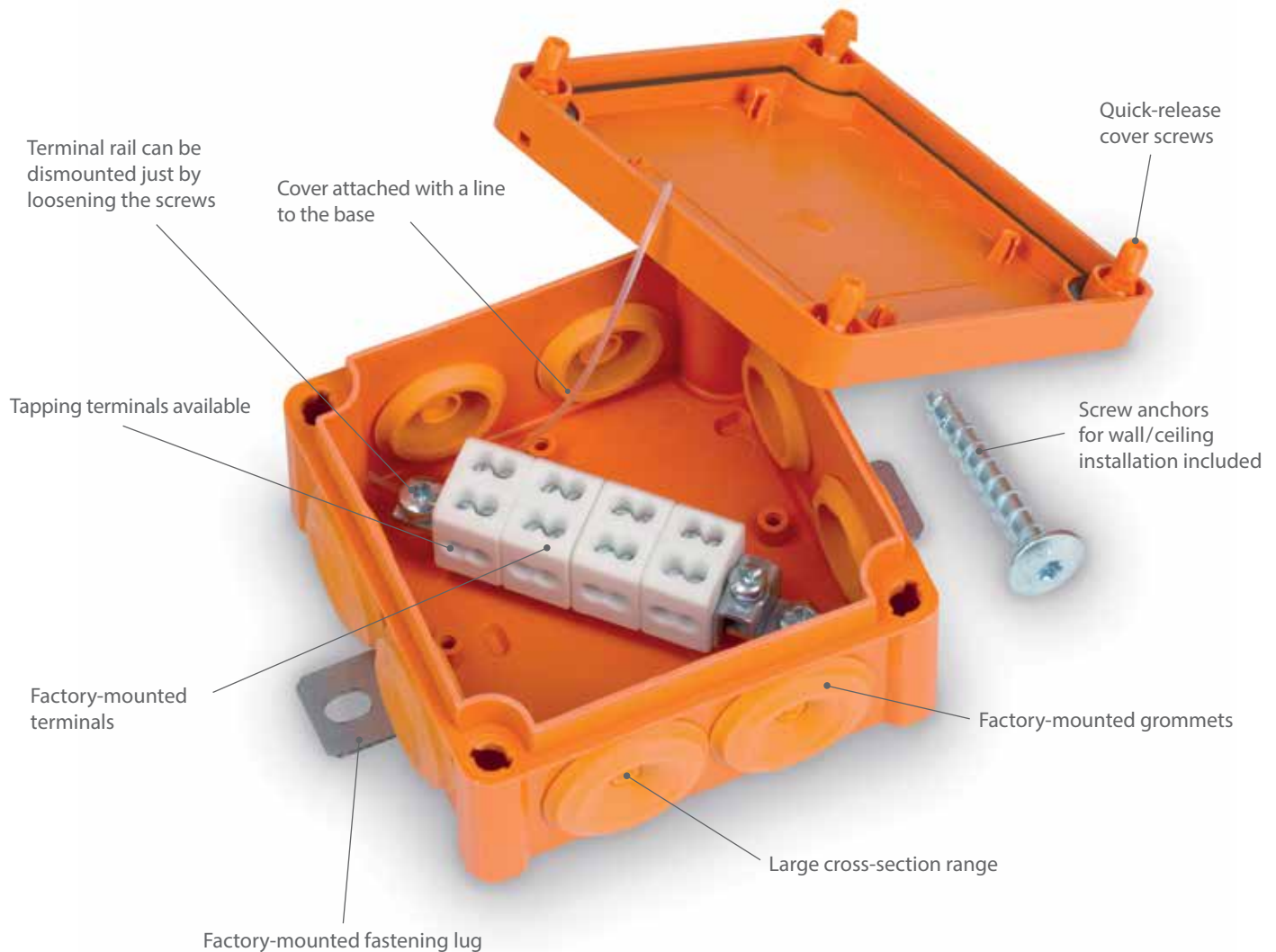
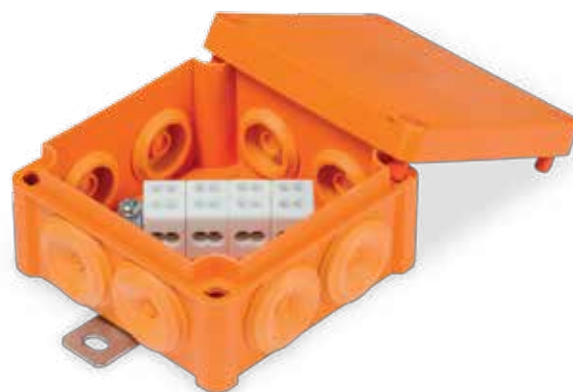


We have thought of every small detail – for efficient installations



Ensto Vulcano plastic junction boxes

The Ensto Vulcano plastic fire protection junction boxes are manufactured from halogen-free thermoplastic with ceramic terminals. Junction boxes are tested to E30, E60, E90, according to DIN 4102-12. The degree of protection is IP65.



Plastic junction boxes in brief

- Halogen-free elastic thermoplastic
- Compact sizes
- Available in two sizes
- Factory-mounted cable entries and fastening lugs
- Screw anchors for wall / ceiling installation included
- Terminal rail easy to mount / dismount
- Quick-release cover screws
- Cover and cover screws equipped with sealing holes
- Cover attached with a line to the base to prevent losing the cover
- Available with single terminal blocks or tapping terminals

Contents of product package

- Enclosure base
- Cover
- Cover screws
- Cover line
- Fastening plate
- Screw anchors for wall/ceiling mounting
- Terminal rail
- Terminal rail mounting screws
- Ceramic terminals
- PE terminal(s)
- Rubber grommets

Conformity	
CE RoHS FI	
Standards	
Boxes for household and similar fixed electrical installations	EN 60670-1:2005 EN 60670-22:2006
Terminal blocks for copper conductors	EN 60947-7-1:2009
Connecting devices for household	EN 60998-2-1:2004
Fire resistance of electric cable systems	DIN 4102-12
Technical information	
Degree of protection	IP65
Cross-section range	Cu 1.5 – 16 mm ²
Nominal current range	41 – 76 A
Nominal insulation voltage	750 V
Ambient temperature (min.)	-25 °C
Ambient temperature (max.)	+40 °C
Ambient temperature (24 h)	+35 °C
Fire resistance class	E30 – E90
Material	
Enclosure	Polypropylene
Screws	Polycarbonate
Gasket	PUR (polyurethane)
Mechanical features	
Cable entries	Rubber grommets and knockouts
Colour	RAL 2003 orange

Product code	Enclosure size	Cross-section (mm ²)	Number of terminals	Number of termination points / terminal	Earthing terminal cross section (mm ²)	Rubber grommets	Knock-outs	Package size (pcs)	Weight (kg)	GTIN-13
FPT1010PP46	100 x 100 x 50	1.5 - 6	4	2	16	8 x M25	2 x M25	8	0.290	6438100180782
FPT1010PP46.4	100 x 100 x 50	1.5 - 6	4	4	16	8 x M25	2 x M25	8	0.307	6438100180799
FPT1815PP416	175 x 150 x 80	2.5 - 16	4	2	35	2 x M32 + 2 x M40	2 x M25 + 6 x M32	6	0.745	6438100180805
FPT1815PP416.4	175 x 150 x 80	2.5 - 16	4	4	35	2 x M32 + 2 x M40	2 x M25 + 6 x M32	6	0.900	6438100180812



FPT1010PP46



FPT1010PP46.4



FPT1815PP46

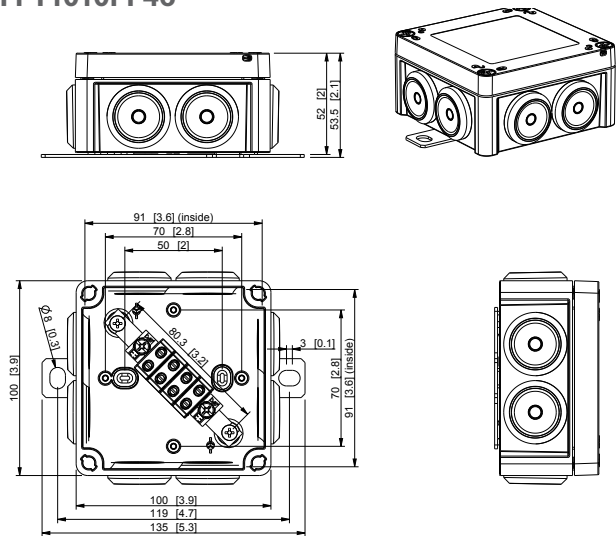


FPT1815PP46.4

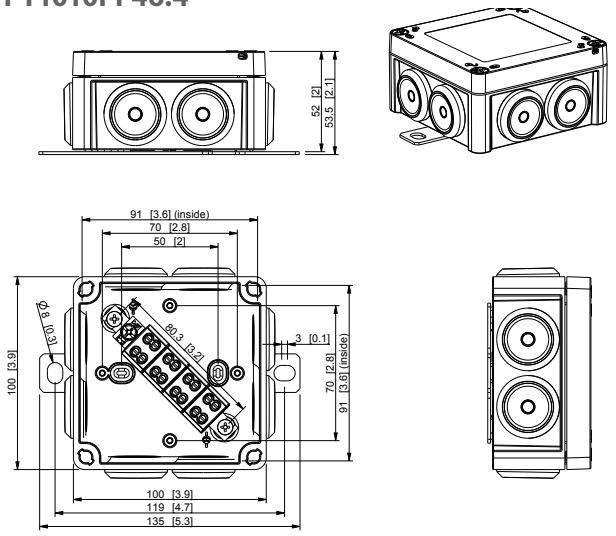
Dimensional drawings

Dimensions in mm [inch]

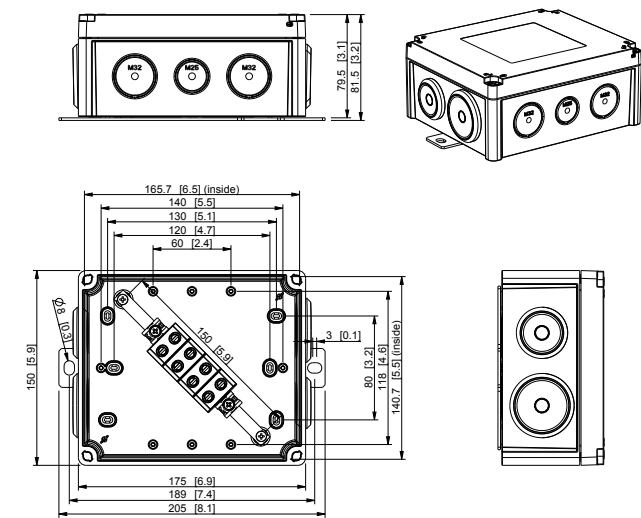
FPT1010PP46



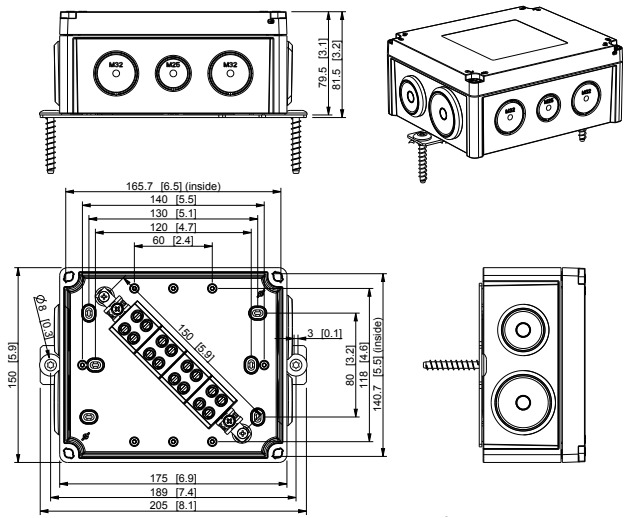
FPT1010PP46.4



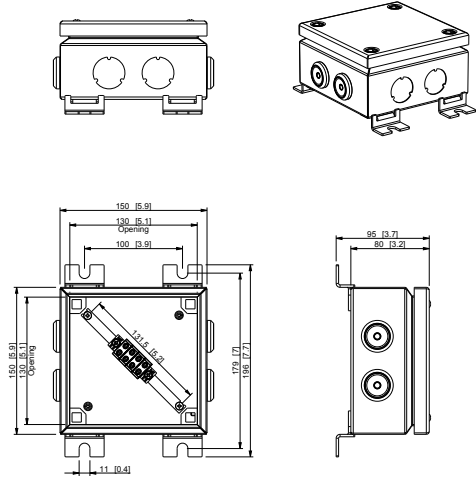
FPT1815PP416



FPT1815PP416.4



FPT1515FE46



FPT1515FE46.4

