



Saves Your Energy

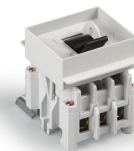
PRODUCT CARD

18.2.2013

KST3.32

Name: **Toggle switch**
3 x 32 A
Type: KST3.32
EAN: 6418677180415

Description: The Ensto Origin range includes toggle switches from 25 A to 100 A.
Package: 30
Unit: PCS



Technical specification

Conductor cross-section mm ² :	Cu 1.5-16 mm ²
Size (mm):	55 x 72 x 74
Breaking capacity 415 V, AC 23 A (A):	320
Making capacity 415 V, AC 23 A (A):	400
Rated conditional short-circuit current (kA _{rms}):	50
Rated impulse withstand voltage U_{imp} :	8 kV
Rated insulation voltage U_i :	690 V
Rated operational current I_{ϕ} :	AC 22 A: 415V, 500V, 690V 32A, AC 23 A: 415V, 500V, 690V 20A
Volume cm ³ :	29,30
Weight (kg):	0,168
Standard:	EN 60947-3
Tightening torque Nm:	2 Nm

Ensto Finland Oy

Ensio Miettisen katu 2
P.O.Box 77
06101 Porvoo, Finland

Tel. +358 204 76 21
Fax +358 204 76 2516

www.ensto.com