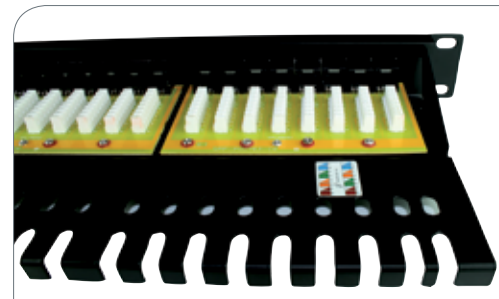
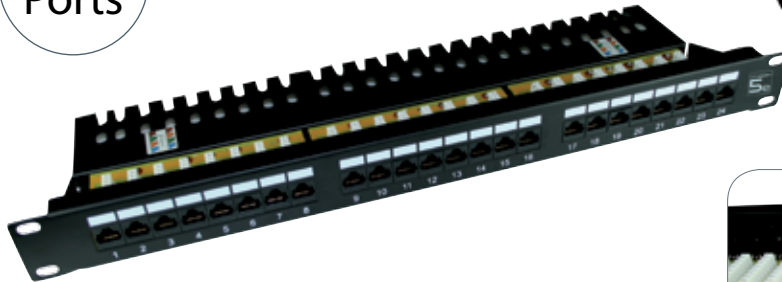


## Category 5e UTP Right Angle Panel

24  
Ports



Category 5e Unshielded Twisted Pair (UTP) patch panels conform to class D performance. Each panel is produced using a right angled (90°) frame design, for flat termination onto the IDC blocks. This ensures that termination and general management is quick and easy when working with bulky horizontal cables.

Integral cable management also provides a solid platform for fixing and managing cable entry. Each port has its own 8 pin IDC block which includes a wiring diagram. Available in 1U 24 port format, panels are supplied with fixings.

### Technical Specifications

MECHANICAL	VALUE
Housing Material	PBT + 15% GF UL94V-0
Panel Frame	Carbon Steel, Powder Coating
IDC Material	Phosphor Bronze Stamp Pin 0.35mm
Contact Material	Phosphor Bronze + Gold Plating 0.50mm
RJ45 Jack Life	Min 750 Insertions
IDC Life	Min 250 Terminations

### Features

- > 19" rack mountable
- > Accepts 24-26 AWG
- > Right angle (90°) design
- > Ports numerically identified
- > Supplied with fixings
- > Integral cable management
- > RJ45 24 port 1U Panel

### Applications

- > Supports category 5e (class D) networks running up to 100 MHz applications

### Conformance

- > Category 5e
- > ISO/IEC 11801 : 2002
- > EIA/TIA 568A/B Wiring standard
- > ANSI/EIA/TIA 568B.2 : 2002
- > EN50173-1 : 2002
- > RoHS
- > UL approved

### Ordering Information

DESCRIPTION	PART NUMBER
Category 5e Unshielded Twisted Pair (UTP) 1U 24 Port 90 degree patch panel - UL approved	CAT5E +UTP24RA