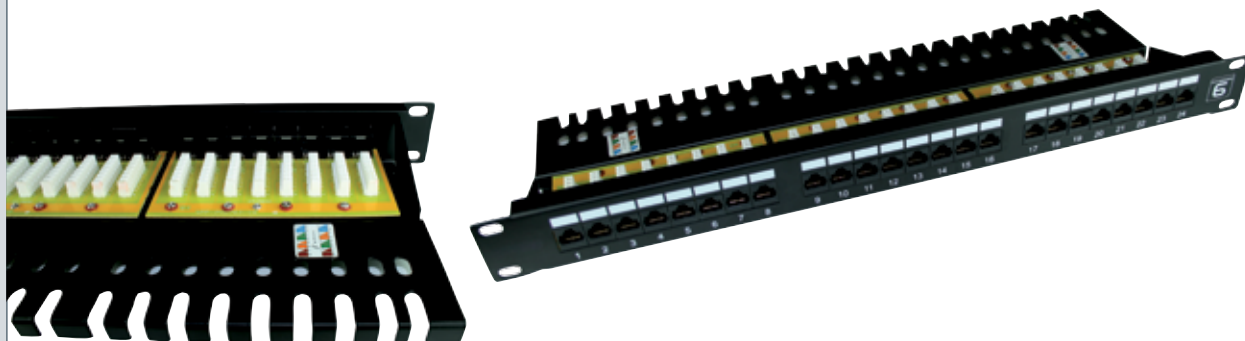


Category 6 24 Ports Right Angle Panel

24
Ports



Category 6 Unshielded Twisted Pair (UTP) patch panels conform to class E performance. Each panel is produced using a right angled (90°) frame design for flat termination onto the IDC blocks. This ensures termination and general management is quick and easy when

working with bulky horizontal cables. Integral cable management also provides a solid platform for fixing and managing cable entry. Each port has its own 8 pin IDC block including a wiring diagram. Available in 1U 24 port format, panels are supplied with fixings.

Features

- > 19" rack mountable
- > Integral cable management
- > RJ45 24 port 1U
- > Ports numerically identified
- > Right angle (90°) design
- > Printed label area
- > Supplied with fixings

Applications

- > Supports category 6 (class E) networks running up to 250 MHz applications
- > Backwards compatible with category 5e distribution systems

Conformance

- > Category 6
- > ISO/IEC 11801 : 2002
- > EIA/TIA 568A/B wiring standard
- > ANSI/EIA/TIA 568B.2 : 2002
- > EN50173-1 : 2002
- > RoHS
- > UL approved

Technical Specifications

MECHANICAL	VALUE
Housing Material	PC UL94V-0
Panel Frame	Zinc Plating, Powder Coating
Contact Material	PC UL94V-0 Contact: Phosphor Bronze + Nickel Plating
IDC Material	Phosphor Bronze Stamp Pin 0.35mm
RJ45 Jack Life	Min 750 Insertions
IDC Life	Min 200 Terminations

Ordering Information

DESCRIPTION	PART NUMBER
Category 6 Unshielded Twisted Pair (UTP) 1U 24 Port 90 degree patch panel UL approved	CAT6+UTP24RA