

PZ7131/7132

Pan/Tilt/Zoom Network Camera

Indoor/2.6x Zoom/Dual Streams



VIVOTEK PZ7131 (PoE) / 7132 (WLAN), equipped with a pan-focus 2.6x optical zoom lens, is a cost-effective pan/tilt/zoom network camera for indoor surveillance applications such as retail stores. It integrates a 2.6x motorized pan-focus zoom module, which can easily zoom in and out to view near or distant objects. With a 350-degree horizontal and 125-degree vertical range of capture, it effectively gives users a wide-area bird's view.

With self-developed VIVOTEK VVTK-1000 SoC, the camera can simultaneously deliver dual video streams for real-time monitoring in either MJPEG or MPEG-4 format with different resolution. PZ7131 supports built-in IEEE 802.3af-compliant PoE (Power over Ethernet) and PZ7132 supports 802.11g wireless LAN connection, making installation easier and more cost-efficient. It comes with the free-bundled, multi-lingual 16-channel recording software, which helps users to set up a powerful surveillance system.

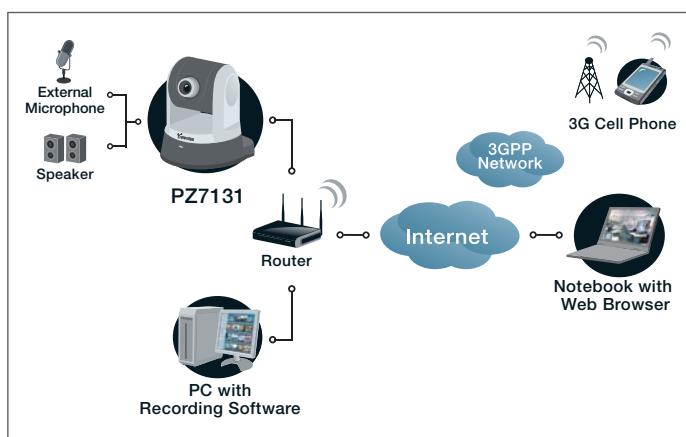
Features

- > Micron 1/4" CMOS Sensor in VGA Resolution
- > 2.6x Pan-focus Zoom Lens
- > Motorized Wide-range Pan/Tilt
(Pan: +175° ~ -175°; Tilt: +90° ~ -35°)
- > Real-time MPEG-4 and MJPEG Compression
(Dual Codec)
- > Supports Dual Streams Simultaneously
- > 3GPP Mobile Surveillance
- > Two-way Audio by SIP Protocol
- > Built-in/External Microphone Switch
- > Built-in 802.3af Compliant PoE (PZ7131)
- > Built-in 802.11b/g WLAN (PZ7132)
- > Digital I/O for External Sensor and Alarm

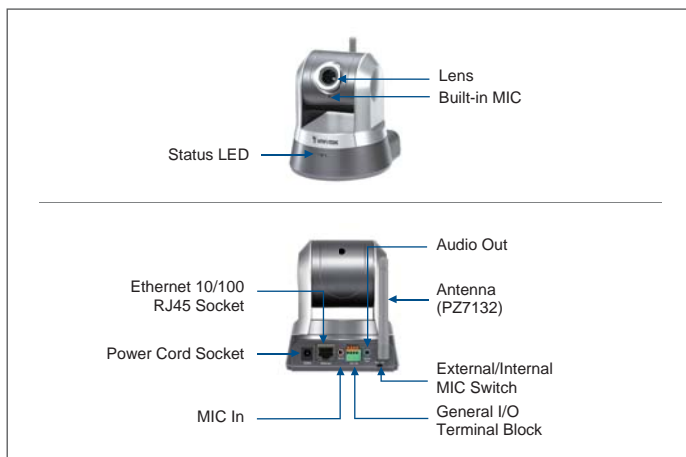
Models	<ul style="list-style-type: none"> · PZ7131 (PoE) · PZ7132 (WLAN)
System	<ul style="list-style-type: none"> · CPU: VVTK-1000 SoC · Flash: 8 MB · RAM: 64 MB · Embedded OS: Linux 2.4
Pan/Tilt/Zoom	<ul style="list-style-type: none"> · Pan range: 350° (+175° ~ -175°) · Tilt range: 125° (+90° ~ -35°) · 2.6x optical zoom · Auto pan mode · Auto patrol mode
Lens	<ul style="list-style-type: none"> · Board lens, 2.6x optical zoom, f=2.8 ~ 7.3 mm, F1.9, auto-iris, focus range: 0.75 mm to infinity
Angle of View	<ul style="list-style-type: none"> · 28.7° ~ 73.4° (horizontal) · 21.6° ~ 54.7° (vertical) · 35.8° ~ 92.2° (diagonal)
Shutter Time	<ul style="list-style-type: none"> · 1/5 sec. to 1/15,000 sec.
Image sensor	<ul style="list-style-type: none"> · Micron 1/4" CMOS sensor in VGA resolution
Minimum Illumination	<ul style="list-style-type: none"> · 1.25 Lux / F1.9
Video	<ul style="list-style-type: none"> · Compression: MJPEG & MPEG-4 · Streaming: <ul style="list-style-type: none"> · Simultaneous dual-streaming · MPEG-4 streaming over UDP, TCP, HTTP, or HTTPS · MPEG-4 multicast streaming · MJPEG streaming over HTTP or HTTPS · Supports 3GPP mobile surveillance · Frame rates: <ul style="list-style-type: none"> · MPEEG-4: Up to 30/25 fps at 640x480 · MJPEG: Up to 30/25 fps at 640x480
Image Settings	<ul style="list-style-type: none"> · Adjustable image size, quality, and bit rate · Time stamp and text caption overlay · Flip & mirror · Configurable brightness, saturation contrast, sharpness and white balance · AGC, AES · Backlight Compensation (BLC)
Audio	<ul style="list-style-type: none"> · Compression: <ul style="list-style-type: none"> · GSM-AMR speech encoding, bit rate: 4.75 kbps to 12.2 kbps · MPEG-4 AAC audio encoding, bit rate: 16 kbps to 128 kbps · Interface: <ul style="list-style-type: none"> · Built-in microphone · External microphone input · External audio output · External/Internal microphone switch · Supports two-way audio by SIP protocol · Supports audio mute
Networking	<ul style="list-style-type: none"> · 10/100 Mbps Ethernet, RJ-45 · Protocols: IPv4, TCP/IP, HTTP, HTTPS, UPnP, RTSP/ RTP/RTCP, IGMP, SMTP, FTP, DHCP, NTP, DNS, DDNS, and PPPoE · Built-in 802.11b/g WLAN (PZ7132)
Alarm and Event Management	<ul style="list-style-type: none"> · Triple-window video for motion detection · One D/I and one D/O for external sensor and alarm · Event notification using HTTP, SMTP, or FTP · Local recording of MP4 file
Security	<ul style="list-style-type: none"> · Multi-level user access with password protection · IP address filtering · HTTPS encrypted data transmission · Wireless: WEP, WPA-PSK, WPA2 (PZ7132)
Users	<ul style="list-style-type: none"> · Camera live viewing for up to 10 clients
Dimension	<ul style="list-style-type: none"> · 103.5 mm (D) x 104.1 mm (W) x 118 mm (H)
Weight	<ul style="list-style-type: none"> · Net: 352 g (PZ7131) · Net: 371 g (PZ7132)
LED Indicator	<ul style="list-style-type: none"> · System power and status indicator · System activity and network link indicator
Power	<ul style="list-style-type: none"> · 12V DC · Power consumption: Max. 12 W · 802.3af compliant Power over Ethernet (PZ7131)

Approvals	<ul style="list-style-type: none"> · CE, LVD, FCC, VCCI, C-Tick
Operating Environments	<ul style="list-style-type: none"> · Temperature: 0 ~ 50° C (32 ~ 122° F) · Humidity: 20% ~ 80% RH
Viewing System Requirements	<ul style="list-style-type: none"> · OS: Microsoft Windows 2000/XP/Vista · Browser: Internet Explorer 6.x or above · Cellphone: 3GPP player · Real Player: 10.5 or above · Quick Time: 6.5 or above
Installation, Management, and Maintenance	<ul style="list-style-type: none"> · Installation Wizard 2 · 32-CH recording software · Supports firmware upgrade
Applications	<ul style="list-style-type: none"> · SDK available for application development and system integration
Warranty	<ul style="list-style-type: none"> · 24 months

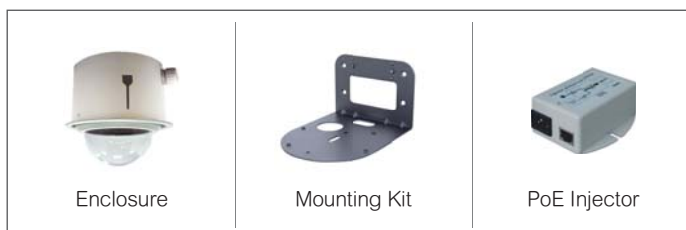
System Overview



External View



Accessories



All specifications are subject to change without notice. Copyright©2008 VIVOTEK INC. All rights reserved.

Distributed by:



6F, NO.192, Lien-cheng Rd., Chung-Ho, Taipei County, Taiwan

T: +886 2 82455282 | F: +886 2 82455532 | E: Sales@vivotek.com