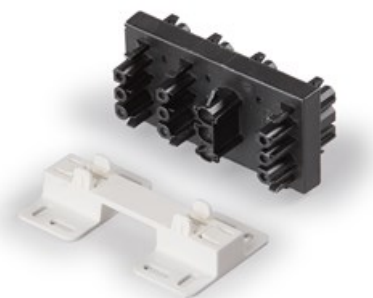


**NAD36.B****Distribution block**

Code	NAD36.B
GTIN	6418677724169
ENumber	
Name	Distribution block EnstoNet Black
Description	Distribution block NAD36.B has one ingoing supply to which a socket is being connected and seven outgoing outputs to which plugs are being connected. Couplers that are to be connected are shown in the connection diagram. The distribution block can be fixed to e.g. a mounting plate with the mounting foot supplied with the distribution block using 4 screws, max. \varnothing 4.2 mm. The distribution block does also partly fit into a min. 70 mm wide lighting track. In this case no separate mounting foot is needed.
Vendor	Ensto Finland Oy ®CECER

**Technical specification****Dimensions**

Weight: 104.2 g

Temperatures

Max. operating temperature: +70 °C
Min. installation temperature: +5 °C
Min. operating temperature: -30 °C (without mechanical stress)

Materials

Material: Polyamide 66

Colors

Color: Black

Certificates

Standards: EN 61535

Ratings

Rated voltage: 250 V

Degree of protection: IP20

Flammability rating: UL 94 V-2

ETIM class: EC002567

ETIM

ETIM

Degree of protection (IP): IP20

Nominal rated current: 20 A

Number of poles: 3

Nominal rated voltage: 250 V

Locking mechanism: Integrated in plug-in connector

Mechanical coding: true

Packaging

Default package

Unit: PCS

Size: 10

Length: 220 mm

Width: 220 mm

Height: 125 mm

Volume: 6.05

Pallet package

Unit: PCS