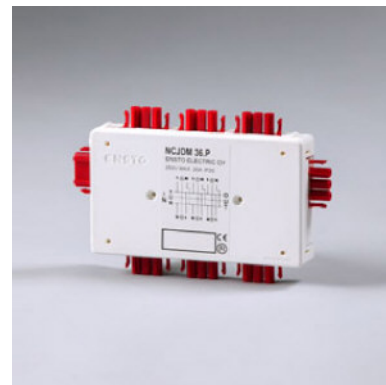
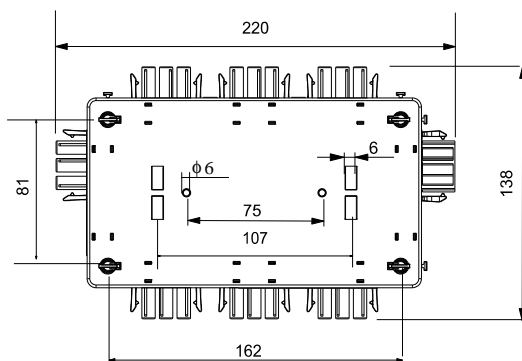
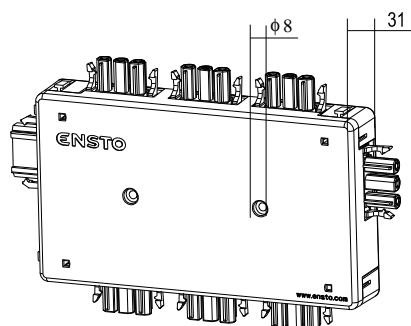




EnstoNet

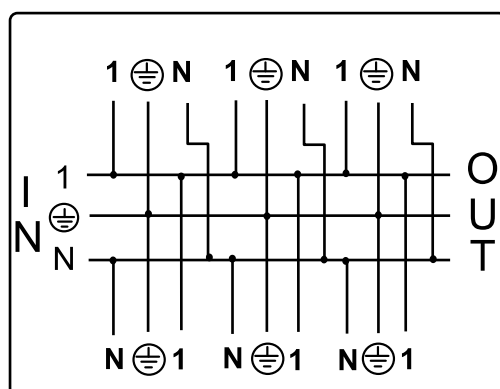
NCJDM 36.P

250V MAX.20A IP20



Out
Connect 3 x 3-Pole Male Red

Connect
3-Pole Female Red



Connect
3-Pole Male Red

Out
Connect 3 x 3-Pole Male Red

NCJDM 36.P

Distribution box, 1-phase continuous, 6-single-phase outputs

With the NCJDM36.P distribution box, a 1-phase supply is branched into 6-single phase outputs. The distribution box can be fixed e.g. to the installation plate by screws, max. \varnothing 6 mm, two holes in the middle (distance between holes 75 mm) or four holes in the corners of the box. The boxes can also be fixed with two cable ties from the clamps on the box base or by using the so-called snap-on pins, for which there are four fixing holes on the box base.

Type	NCJDM 36.P Distribution Box, Red connectors
Description	1 phase -o- , 6-single phase outputs
Voltage	U=250VAC
Current	I= 20A max -o-
IP Class	IP20
Ean Code	6418677707933
Sstl No.	
E No.	
Weight/Pcs	287g.
Pack Qty	10
Approvals	FI