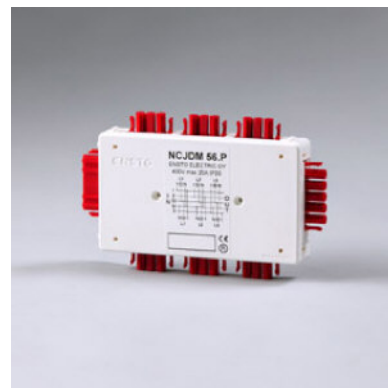
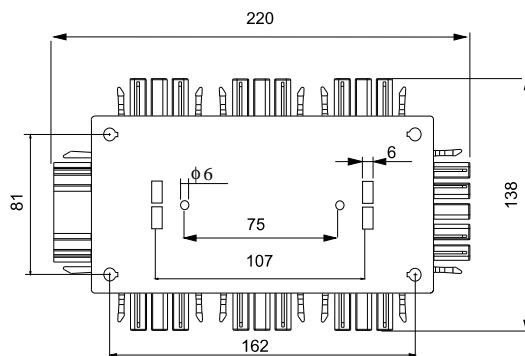
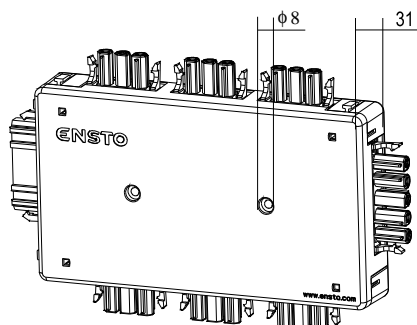




EnstoNet

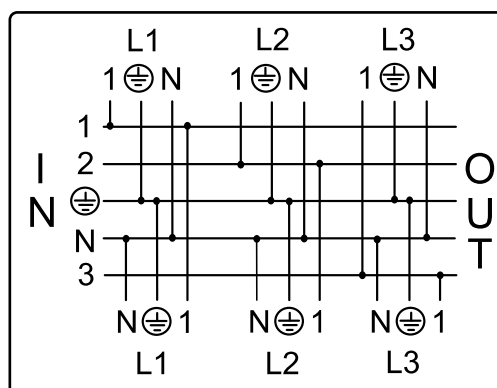
NCJDM 56.P

400V MAX.20A IP20



Out
Connect 3 x 3-Pole Male Red

Connect
5-Pole Female Red



Connect
5-Pole Male Red

Out
Connect 3 x 3-Pole Male Red

NCJDM 56.P

Distribution box, 3-phase continuous, 6-single-phase outputs.

With the NCJDM56.P distribution box, a 3-phase supply is branched into 6-single phase outputs. The distribution box can be fixed e.g. to the installation plate by screws, max. \varnothing 6 mm, two holes in the middle (distance between holes 75 mm) or four holes in the corners of the box. The boxes can also be fixed with two cable ties from the clamps on the box base or by using the so-called snap-on pins, for which there are four fixing holes on the box base.

Type	NCJDM 56.P Distribution Box
Description	3 phase -o- , 6-single phase outputs
Voltage	U=400VAC
Current	I= 20A max -o-
IP Class	IP20
Ean Code	6418677707957
Sstl No.	
E No.	
Weight/Pcs	315g.
Pack Qty	10
Approvals	FI