

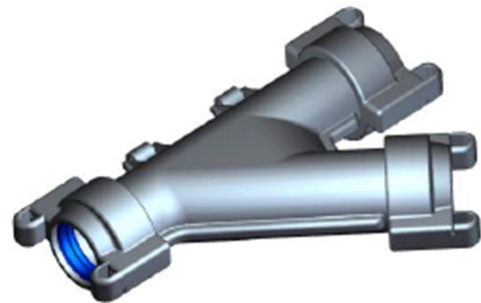
Y Closure

Product Technical sheet

Product Description

Each Kit shall comprise of the following components:

- Lower Shell (1pc)
- Upper Shell (1pc)
- Lower Cap (3pcs)
- Upper Cap (3pcs)



Technical Specification

Materials:

Shell: ABS

Claw: POM

Cap: ABS

Dimensions:

Length: 290mm (11.4").

Width: 205mm (8.1").

Height: 87mm (3.4").

Weight: 430g

Color:

Shells: Black

All the other plastic parts are black, or white.

Crush: 1000N/10mins

Impact: >20 joule

Pull-out: >1000N

For duct size: OD 40mm

