

FRB-2B Fiber Rossette - 2 Cores

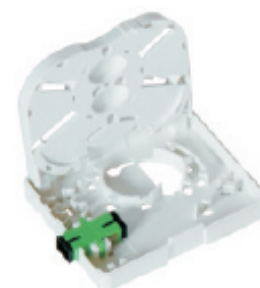
Description

FRB-2B fiber rossette box is able to hold up to 2 subscribers. It is used as a termination point for the drop cable to connect with patch cable in FTTH indoor application. It integrates fiber splicing, termination, storage and cable connection in one solid protection box.



Features

- Dust-proof design with IP-45 Protection level.
- Integrated with splice cassette and cable management rods.
- Manage fibers in a reasonable fiber radius condition.
- Easy to maintain and extend the capacity.
- Suitable for the fusion splice or mechanical splice.
- Embedded type surface, easy for installation and removal.
- 2 ports cable entrance for patch cable.



SPECIFICATIONS

Item	Parameters
Scope of application	3.0x2.0mm drop cable or indoor cable
Fiber cladding diameter	125um (G652&G657)
Fiber diameter	250um&900um
Fiber type	SM&MM
Tensile strength	> 50 N
Operating temperature	-40 ~ +85 C
Connecting Adapter	SC & LC
Insertion loss	<0.2dB
Return loss	>50dB(UPC), >60dB(APC)

Configuration

Material	Size	Max Capacity		Mounting Way	Weight	Color
PC + ABS	A*B*C(mm) 100*80*23	SC 2 Ports	LC 4 Ports	Wall Mounting	0.2kg	White

Standard Accessories

Installation nuts and bolts, protection sleeves.